

Rancho Cordova

Introduction to Districting

August 14, 2023

Election Systems

1. “At Large”
2. “From District” or “Residence” Districts
3. “By District”

The California Voting Rights Act was written to specifically encourage by-district elections.

Topics Not Covered in Districting

- Term Limits
- Council pay
- Full- vs Part-time Council
- “Strong Mayor” form of government

Any of these topics would be a separate agenda item and adoption process.

California Voting Rights Act (CVRA)

- Under the Federal Voting Rights Act (passed in 1965), a jurisdiction must fail 4 factual tests before it is in violation of the law.

- The California VRA makes it significantly easier for plaintiffs to force jurisdictions into “by-district” election systems by eliminating two of the US Supreme Court Gingles tests:
 - ~~Can the protected class constitute the majority of a district?~~
 - Does the protected class vote as a bloc?
 - Do the voters who are not in the protected class vote in a bloc to defeat the preferred candidates of the protected class?
 - ~~Do the “totality of circumstances” indicate race is a factor in elections?~~

- Liability is now determined only by the presence of racially polarized voting

CVRA Impact

- Switched (or in the process of switching) as a result of CVRA:
 - At least 275 school districts
 - 36 Community College Districts
 - 191 cities
 - 1 County Board of Supervisors
 - 53 water and other special districts.
- Palmdale, Santa Clara and Santa Monica fought “on the merits.” All lost.
 - Santa Monica and Santa Clara are appealing.
 - Palmdale spent about \$1.8 million, Santa Clara about \$800,000, and Santa Monica between \$5 and \$8 million, just on their defense.
 - Santa Monica plaintiffs requested \$22 million
 - No jurisdiction has won a case.
- Key settlements:
 - Palmdale: \$4.7 million
 - Santa Clara: \$3.16 million
 - Modesto: \$3 million
 - Highland: \$1.3 million
 - Anaheim: \$1.1 million
 - Whittier: \$1 million
 - Santa Barbara: \$600,000
 - Tulare Hospital: \$500,000
 - Compton Unified: \$200,000
 - Madera Unified: about \$170,000
 - Hanford Joint Union Schools: \$118,000
 - Merced City: \$42,000

Districting Process

Step	Description
Hearing 1 August 7	Held prior to release of draft maps. Education and to solicit input on the composition of districts.
Community Forum August 10	Informal discussion of process, mapping tools, neighborhoods and communities of interest.
Hearing 2 August 14	Held prior to release of draft maps. Education and to solicit input on the composition of districts.
Initial Map Deadline August 18	Initial deadline for residents to submit draft maps for Council consideration at the August 29 hearing.
Draft Maps Posted August 22	All draft maps must be posted on the project website 7 days in advance of the August 29 hearing.
Hearing 3 August 29	First Council consideration of draft maps.
Community Forum August 30	Informal discussion of draft maps.
Final Map Submission Deadline September 7	Deadline for residents to submit draft maps for Council consideration at the September 18 hearing.
All Draft Maps Posted September 11	All draft maps must be posted on the project website 7 days in advance of the September 18 hearing.
Hearing 4 and Map Selection September 18	Council consideration of draft maps, selection of preferred map and election sequence, and introduction of ordinance adopting the map.
Hearing 5 and Map adoption October 2	Public hearing followed by second reading of the ordinance adopting the map.

Districting Rules and Goals

1. Federal Laws

Equal Population
Federal Voting Rights Act
No Racial Gerrymandering



2. California Criteria for Cities

1. **Geographically contiguous**
2. **Undivided neighborhoods and “communities of interest”**
(Socio-economic geographic areas that should be kept together)
3. **Easily identifiable boundaries**
4. **Compact**
(Do not bypass one group of people to get to a more distant group of people)

Prohibited: “Shall not favor or discriminate against a political party.”

3. Other Traditional Districting Principles

Respect voters’ choices / continuity in office
Future population growth

Demographic Summary

The ideal population is the total population divided by the number of districts:

# Districts	Ideal Pop.
5	15,929
6	13,274
7	11,378

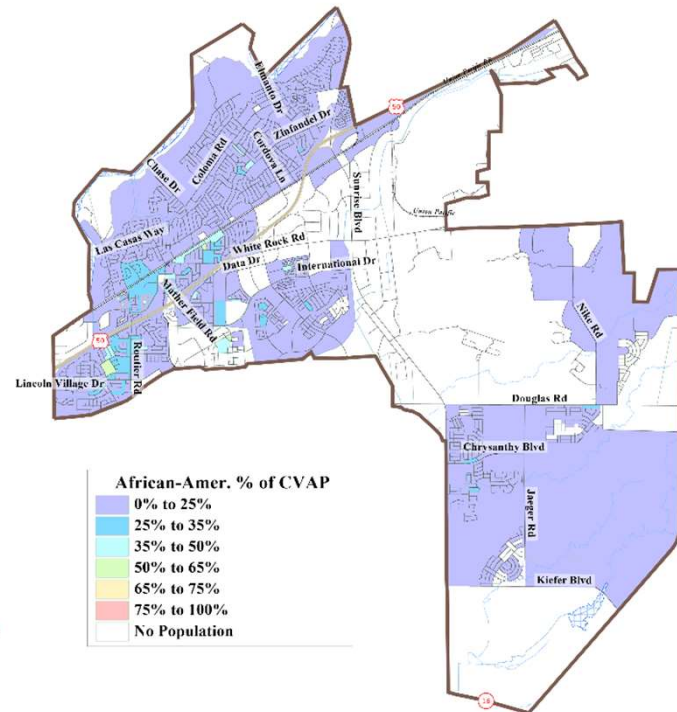
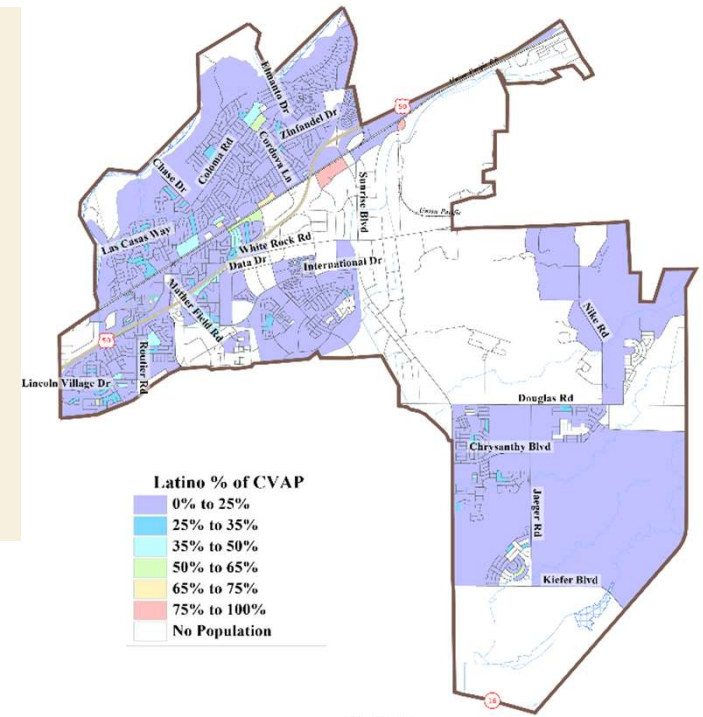
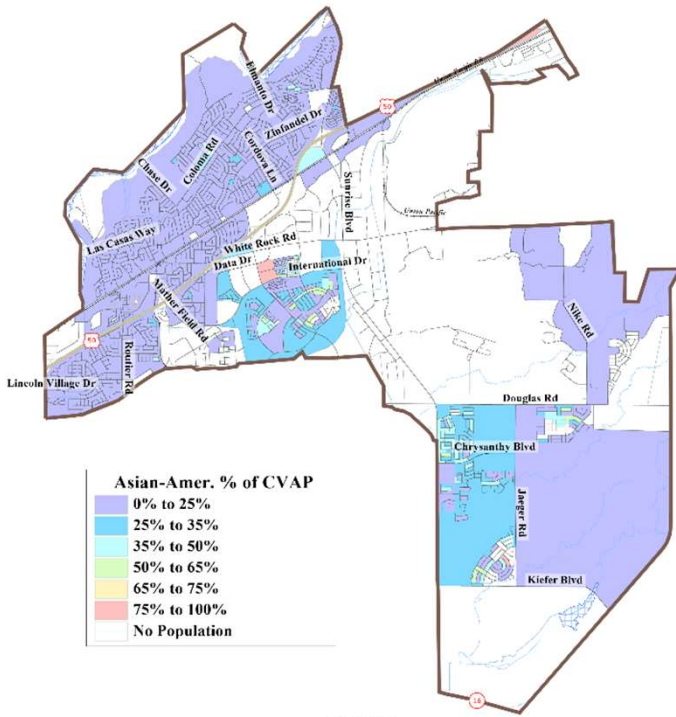
Category	Field	Total	Category	Field	Total
2020 Census	Total Population	79,643	Age	age0-19	28%
Total Pop.	Hispanic/Latino	22%		age20-60	55%
	NH White	45%		age60plus	17%
	NH Black	11%	Immigration	immigrants	24%
	NH Asian/Pac.Isl.	19%		naturalized	61%
	NH Native Amer.	2%	Language spoken at home	english	65%
Citizen Voting Age Pop	Total	51,505		spanish	12%
	Hisp	16%		asian-lang	9%
	NH White	54%		other lang	14%
	NH Black	13%	Language Fluency	Speaks Eng. "Less than Very Well"	16%
	Asian/Pac.Isl.	15%		Education (among those age 25+)	hs-grad
Native Amer.	1%	bachelor	19%		
Voter Registration (Nov 2020)	Total	42,812	graduatedegree		8%
	Latino est.	15%	Child in Household	child-under18	37%
	Spanish-Surnamed	14%	Pct of Pop. Age 16+	employed	67%
	Asian-Surnamed	6%		Household Income	income 0-25k
	Filipino-Surnamed	2%	income 25-50k		17%
	NH White est.	65%	income 50-75k		18%
NH Black	11%	income 75-200k	44%		
Voter Turnout (Nov 2020)	Total	33,951	income 200k-plus		7%
	Latino est.	13%	Housing Stats	single family	74%
	Spanish-Surnamed	13%		multi-family	26%
	Asian-Surnamed	6%		rented	44%
	Filipino-Surnamed	2%		owned	56%
	NH White est.	66%	Voter Turnout (Nov 2018)	Total	22,072
NH Black	11%	Latino est.		12%	
Voter Turnout (Nov 2018)	Total	22,072		Spanish-Surnamed	11%
	Latino est.	12%		Asian-Surnamed	5%
	Spanish-Surnamed	11%		Filipino-Surnamed	2%
	Asian-Surnamed	5%	NH White est.	69%	
	Filipino-Surnamed	2%	NH Black est.	11%	

Total population data from California's adjusted 2020 Census data. Citizen Voting Age Population, Age, Immigration, and other demographics from the 2017-2021 American Community Survey and Special Tabulation 5-year data. Turnout and Registration data from California Statewide Database. "Latino" figures calculated by NDC using Census Bureau's Latino undercount by surname estimate.

Protected Class Concentrations

Asian-Americans are concentrated around Stone Creek and Tuscany Parks and around Anatolia.

Latinos and African-Americans are not geographically concentrated.



Defining Neighborhoods

1st Question: What is your neighborhood?

2nd Question: What are its geographic boundaries?

Examples of physical features defining a neighborhood boundary:

- Natural neighborhood dividing lines, such as highway or major roads, rivers, canals and/or hills
- Areas around parks or schools
- Other neighborhood landmarks

In the absence of public testimony, planning records and other similar documents may provide definition.



Beyond Neighborhoods: Defining Communities of Interest

1st Question: What defines your community?

- Geographic Area, plus
- Shared issue or characteristic
 - Shared social or economic interest
 - Impacted by city policies
- Tell us “your community’s story”

2nd Question: Would this community benefit from being “included within a single district for purposes of its effective and fair representation”?

- Or would it benefit more from having multiple representatives?

Definitions of Communities of Interest may not include relationships with political parties, incumbents, or political candidates.

Project Website



Select Language

Search...



Welcome

Schedule

Draft Maps

Draw A Map

FAQ

Resources

Contact

Welcome

District Elections

The City of Rancho Cordova, like hundreds of cities and school districts across the state, is making a change in how voters elect its City Council. Beginning with the 2024 Council election, voters will vote for one City Council Member who lives in and represents their district.

We need your help to make this change and draw new City Council districts!

One of our primary goals when drawing City Council districts is to draw lines that respect neighborhoods, history, and geographical elements. So we want to know: What do you consider the boundaries of your neighborhood?

How to participate?

Share your specific thoughts, draw a map, or attend an upcoming workshop to get involved!

- Submit written testimony about your community, the process, or a specific map to districts@cityofranhocordova.org.
- [Click here](#) to see the calendar of workshops and public hearings at which you can speak about the process or a specific map.
- [Click here](#) to view the draft maps or here to go directly to the Interactive Review Map.
- [Click here](#) for information on drawing and submitting maps.

At the hearings and workshops, we want you to:

- Define your neighborhood or community of interest
- Get the tools you need to draw a map of one district or of all districts
- Share your opinions of the draft maps

Public Mapping and Map Review Tools

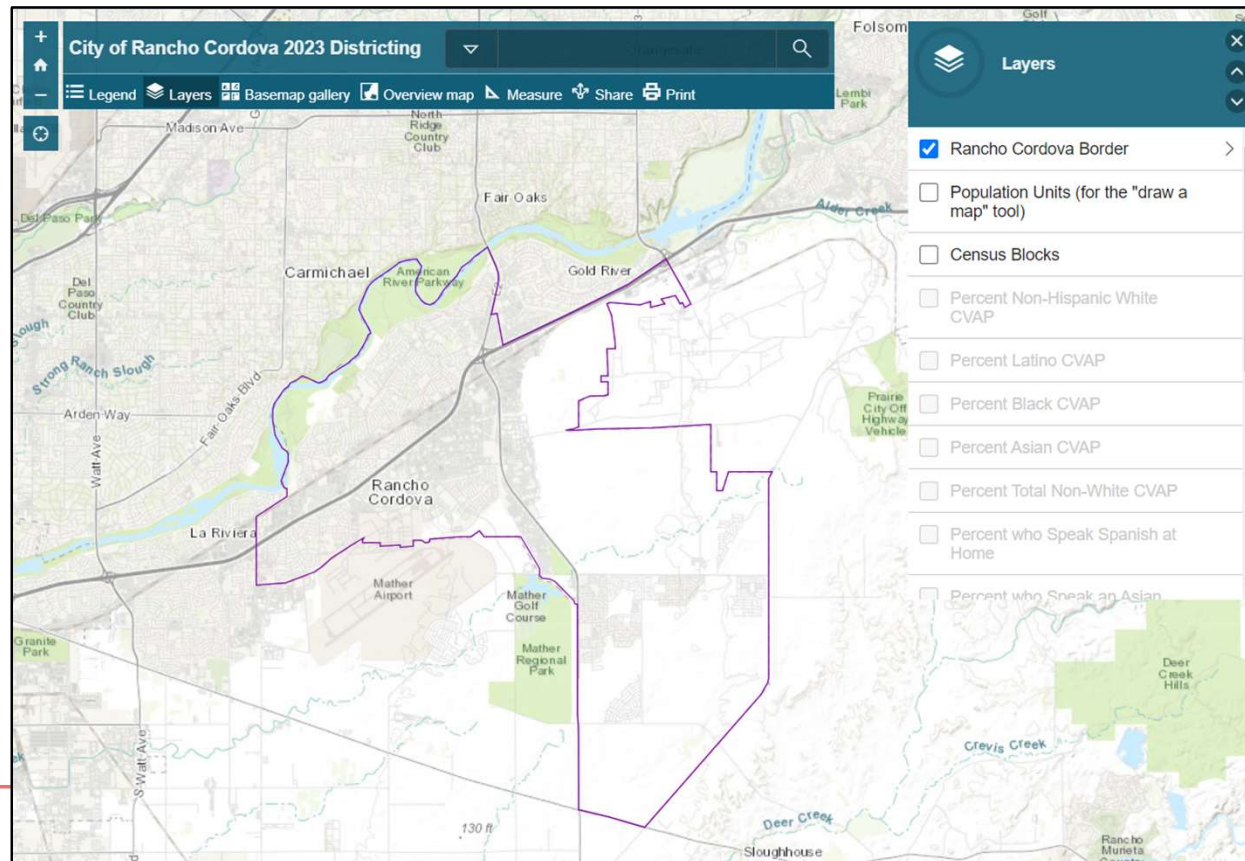
- **Different tools for different purposes**
- **Different tools for different levels of technical skill and interest**
 - Simple “review draft maps” tool
 - Easy-to-use one-page paper mapping tool
 - Powerful, data-rich “Draw a draft map” online tool

Whether you use the powerful online mapping tool, the paper tool, or just draw on a napkin, we welcome your maps!

Simple Map Review Tool

Online Interactive Review Map

- ESRI's "ArcGIS Online" – similar to Google Maps in ease of use
- Used to review, analyze and compare maps (not to create them)
- Includes overlays of "community of interest" and other data



Simple Map Drawing Tool

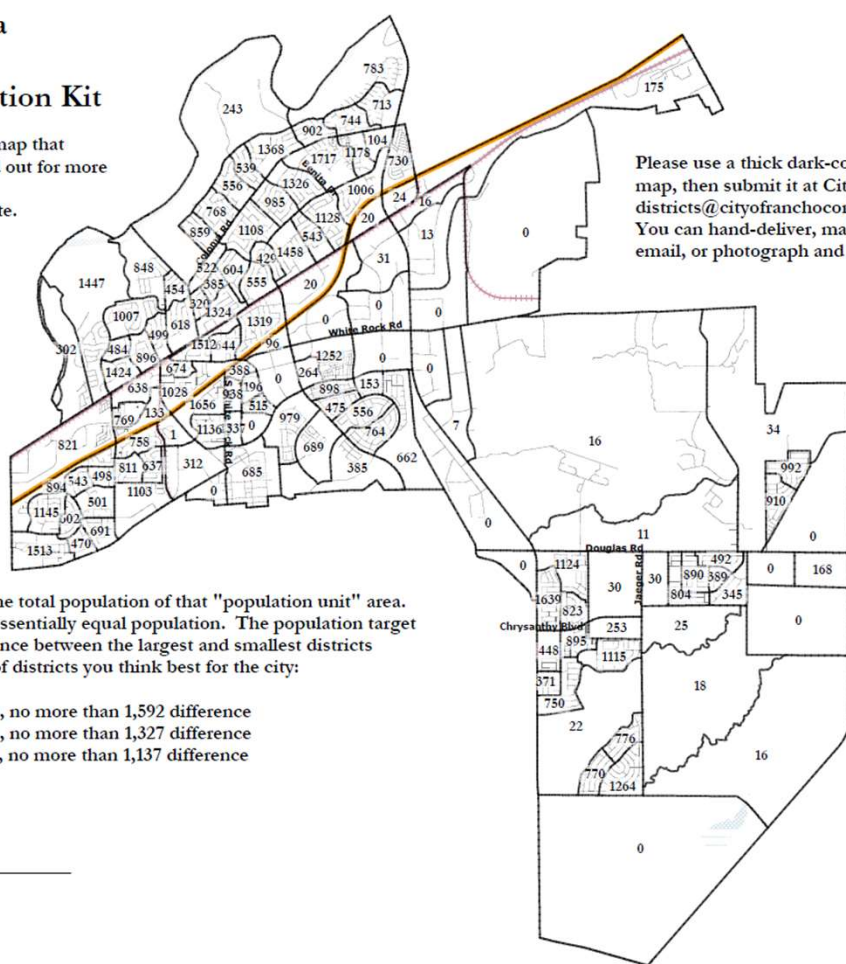
Paper “Public Participation Kit”

- For those without internet access or who prefer paper
- Total Population Counts only – no demographic numbers

**Rancho Cordova
2023 Districting
Public Participation Kit**

An online version of this map that allows you to zoom in and out for more detail is available as a link from the City website.

Please use a thick dark-colored pen to draw your map, then submit it at City Hall or by email to districts@cityofranhocordova.org. You can hand-deliver, mail, fax, scan and email, or photograph and email your map.



Each number indicates the total population of that "population unit" area. Each district must have essentially equal population. The population target and the maximum difference between the largest and smallest districts depends on the number of districts you think best for the city:

5 Districts: Target: 15,929, no more than 1,592 difference
6 Districts: Target: 13,274, no more than 1,327 difference
7 Districts: Target: 11,378, no more than 1,137 difference

Name: _____

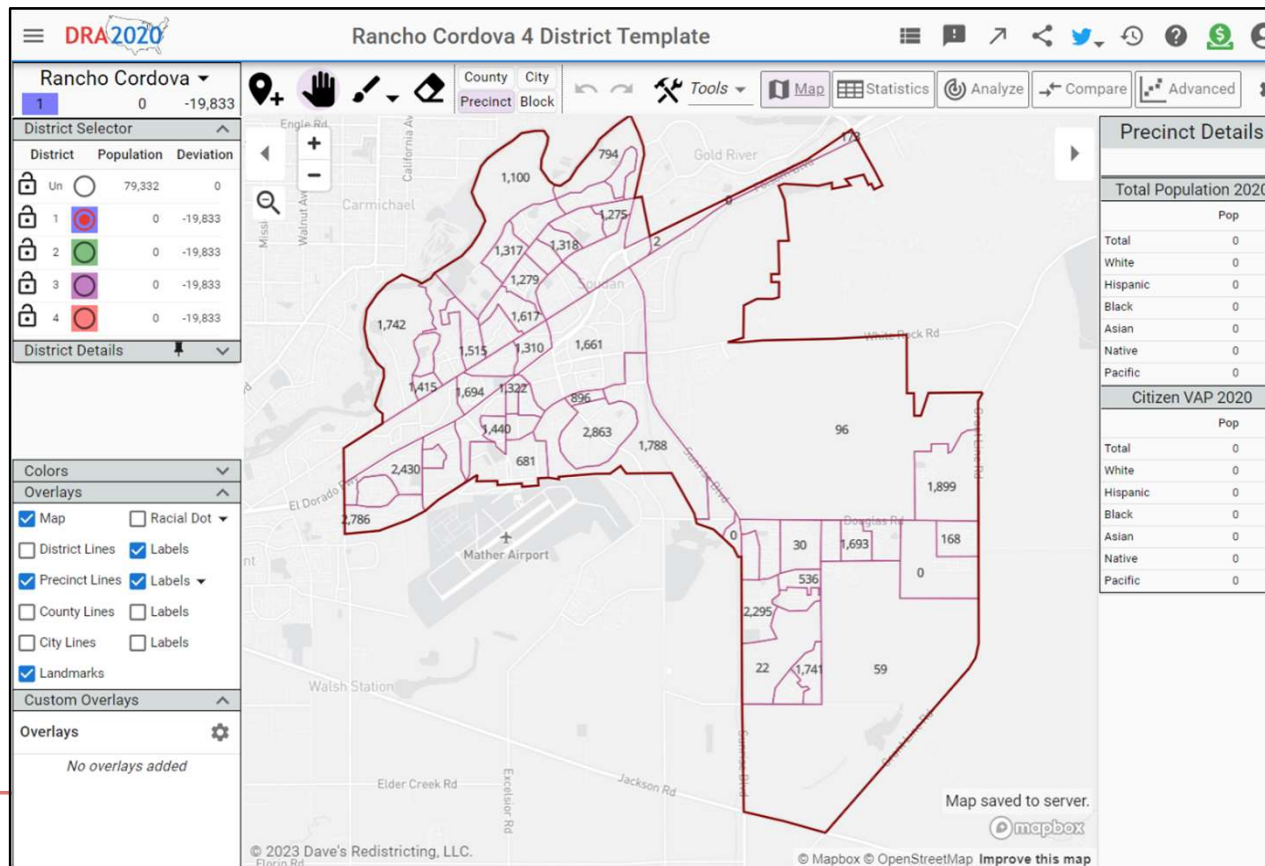
Phone and/or email: _____

National Demographics Corporation, July 21, 2023
©2021 CALIPER

Online Map Drawing Tool

Simple “paintbrush & eraser” tool. A 4-minute “how-to” video is on the website.

- Full demographic data available
- Create, collaborate and share your map
- Remember: you must send in the link to your map when you finish or the City has no way to know you drew a map!



Public Hearing & Discussion

Public Hearing Questions:

- ❑ What is your neighborhood and what are its boundaries?
- ❑ Any preferences on the number of districts and a rotating or citywide-elected Mayor?
- ❑ Any questions about the mapping tools?

Requested Council Direction:

- ❑ Direction on the number of districts and a rotating or citywide-elected Mayor.
 - ❑ Last week the Council narrowed the options to 4, 5 or 6.
 - ❑ Even numbers of districts have a citywide-elected Mayor; Odd numbers of districts have a rotating Mayor.