

# Rancho Cordova Introduction to Districting

August 10, 2023

# Election Systems

---

1. “At Large”
2. “From District” or “Residence” Districts
3. “By District”

The California Voting Rights Act was written to specifically encourage by-district elections.

# Districting Process

Step	Description
<b>Hearing 1</b> August 7	Held prior to release of draft maps. Education and to solicit input on the composition of districts.
<b>Community Forum</b> August 10	Informal discussion of process, mapping tools, neighborhoods and communities of interest.
<b>Hearing 2</b> August 14	Held prior to release of draft maps. Education and to solicit input on the composition of districts.
<b>Initial Map Deadline</b> August 18	Initial deadline for residents to submit draft maps for Council consideration at the August 29 hearing.
<b>Draft Maps Posted</b> August 22	All draft maps must be posted on the project website 7 days in advance of the August 29 hearing.
<b>Hearing 3</b> August 29	First Council consideration of draft maps.
<b>Community Forum</b> August 30	Informal discussion of draft maps.
<b>Final Map Submission Deadline</b> September 7	Deadline for residents to submit draft maps for Council consideration at the September 18 hearing.
<b>All Draft Maps Posted</b> September 11	All draft maps must be posted on the project website 7 days in advance of the September 18 hearing.
<b>Hearing 4 and Map Selection</b> September 18	Council consideration of draft maps, selection of preferred map and election sequence, and introduction of ordinance adopting the map.
<b>Hearing 5 and Map adoption</b> October 2	Public hearing followed by second reading of the ordinance adopting the map.

# Districting Rules and Goals

## 1. Federal Laws

Equal Population  
Federal Voting Rights Act  
No Racial Gerrymandering



## 2. California Criteria for Cities

1. **Geographically contiguous**
2. **Undivided neighborhoods and “communities of interest”**  
(Socio-economic geographic areas that should be kept together)
3. **Easily identifiable boundaries**
4. **Compact**  
(Do not bypass one group of people to get to a more distant group of people)

**Prohibited:** “Shall not favor or discriminate against a political party.”

## 3. Other Traditional Districting Principles

Respect voters’ choices / continuity in office  
Future population growth

# Demographic Summary

The ideal population is the total population divided by the number of districts:

# Districts	Ideal Pop.
5	15,929
6	13,274
7	11,378

Category	Field	Total	Category	Field	Total
2020 Census	Total Population	79,643	Age	age0-19	28%
Total Pop.	Hispanic/Latino	22%		age20-60	55%
	NH White	45%		age60plus	17%
	NH Black	11%	Immigration	immigrants	24%
	NH Asian/Pac.Isl.	19%		naturalized	61%
	NH Native Amer.	2%	Language spoken at home	english	65%
Citizen Voting Age Pop	Total	51,505		spanish	12%
	Hisp	16%		asian-lang	9%
	NH White	54%		other lang	14%
	NH Black	13%	Language Fluency	Speaks Eng. "Less than Very Well"	16%
	Asian/Pac.Isl.	15%		Education (among those age 25+)	hs-grad
Native Amer.	1%	bachelor	19%		
Voter Registration (Nov 2020)	Total	42,812	graduatedegree		8%
	Latino est.	15%	Child in Household	child-under18	37%
	Spanish-Surnamed	14%	Pct of Pop. Age 16+	employed	67%
	Asian-Surnamed	6%		Household Income	income 0-25k
	Filipino-Surnamed	2%	income 25-50k		17%
	NH White est.	65%	income 50-75k		18%
NH Black	11%	income 75-200k	44%		
Voter Turnout (Nov 2020)	Total	33,951	income 200k-plus		7%
	Latino est.	13%	Housing Stats	single family	74%
	Spanish-Surnamed	13%		multi-family	26%
	Asian-Surnamed	6%		rented	44%
	Filipino-Surnamed	2%		owned	56%
	NH White est.	66%	Voter Turnout (Nov 2018)	Total	22,072
NH Black	11%	Latino est.		12%	
Voter Turnout (Nov 2018)	Total	22,072		Spanish-Surnamed	11%
	Latino est.	12%		Asian-Surnamed	5%
	Spanish-Surnamed	11%		Filipino-Surnamed	2%
	Asian-Surnamed	5%	NH White est.	69%	
	Filipino-Surnamed	2%	NH Black est.	11%	

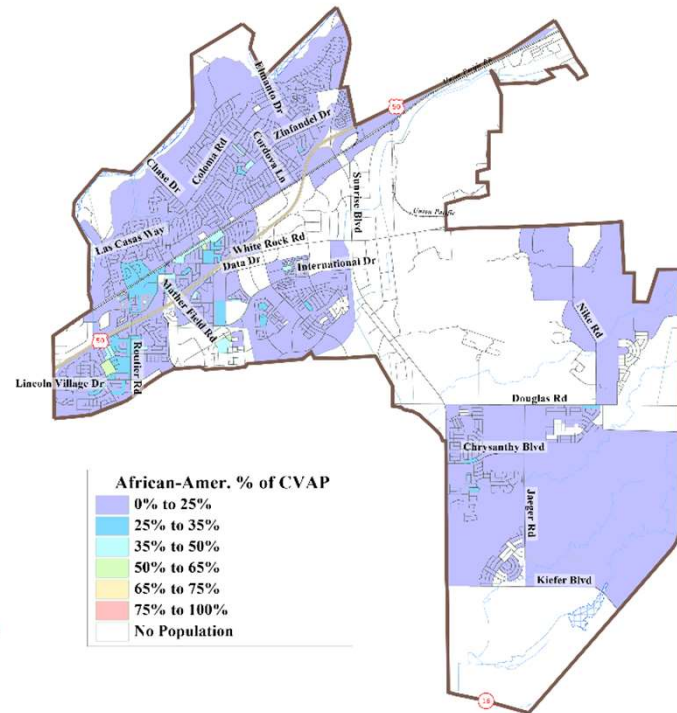
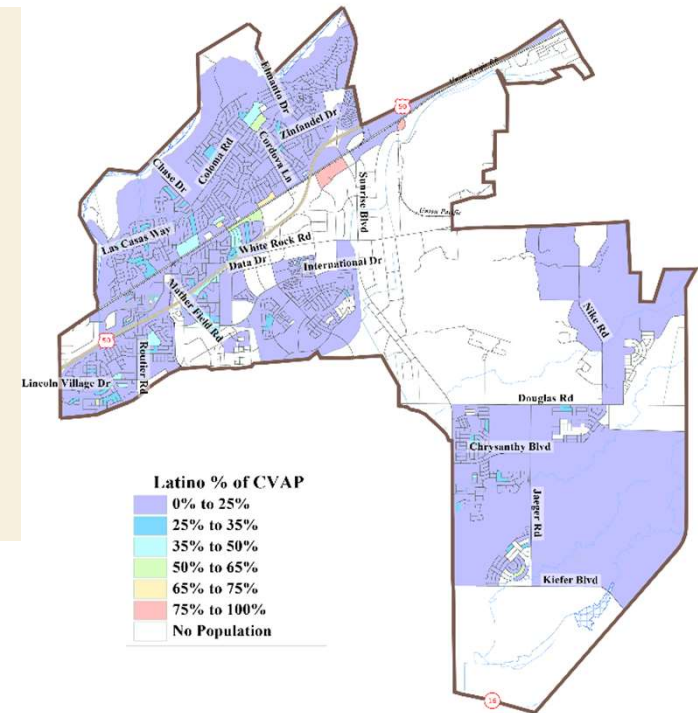
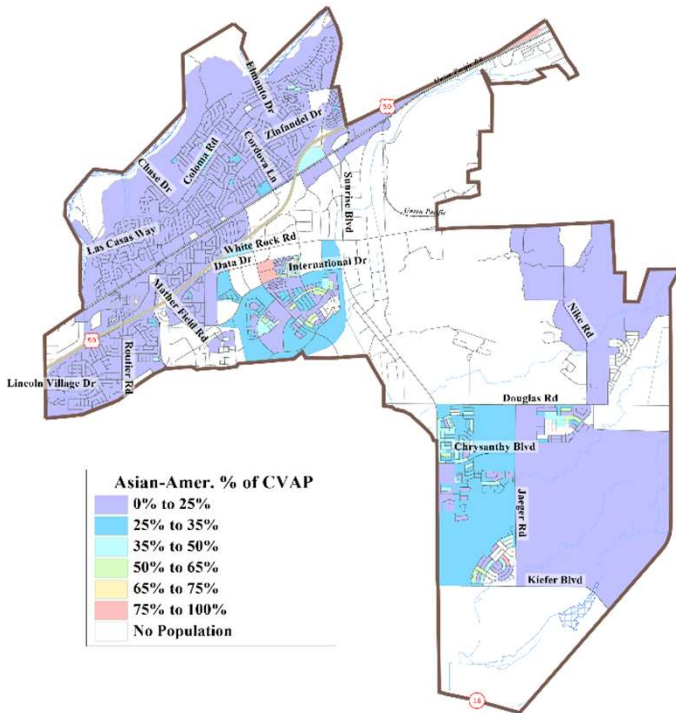
Total population data from California's adjusted 2020 Census data. Citizen Voting Age Population, Age, Immigration, and other demographics from the 2017-2021 American Community Survey and Special Tabulation 5-year data. Turnout and Registration data from California Statewide Database. "Latino" figures calculated by NDC using Census Bureau's Latino undercount by surname estimate.



# Protected Class Concentrations

Asian-Americans are concentrated around Stone Creek and Tuscany Parks and around Anatolia.

Latinos and African-Americans are not geographically concentrated.



# Defining Neighborhoods

---

**1<sup>st</sup> Question: What is your neighborhood?**

**2<sup>nd</sup> Question: What are its geographic boundaries?**

**Examples of physical features defining a neighborhood boundary:**

- Natural neighborhood dividing lines, such as highway or major roads, rivers, canals and/or hills
- Areas around parks or schools
- Other neighborhood landmarks

**In the absence of public testimony, planning records and other similar documents may provide definition.**



# Beyond Neighborhoods: Defining Communities of Interest

---

## 1<sup>st</sup> Question: What defines your community?

- Geographic Area, plus
- Shared issue or characteristic
  - Shared social or economic interest
  - Impacted by city policies
- Tell us “your community’s story”

## 2<sup>nd</sup> Question: Would this community benefit from being “included within a single district for purposes of its effective and fair representation”?

- Or would it benefit more from having multiple representatives?

Definitions of Communities of Interest may not include relationships with political parties, incumbents, or political candidates.



# Project Website



Select Language

Search...



Welcome

Schedule

Draft Maps

Draw A Map

FAQ

Resources

Contact

## Welcome

### District Elections

The City of Rancho Cordova, like hundreds of cities and school districts across the state, is making a change in how voters elect its City Council. Beginning with the 2024 Council election, voters will vote for one City Council Member who lives in and represents their district.

We need your help to make this change and draw new City Council districts!

One of our primary goals when drawing City Council districts is to draw lines that respect neighborhoods, history, and geographical elements. So we want to know: What do you consider the boundaries of your neighborhood?

### How to participate?

Share your specific thoughts, draw a map, or attend an upcoming workshop to get involved!

- Submit written testimony about your community, the process, or a specific map to [districts@cityofranhocordova.org](mailto:districts@cityofranhocordova.org).
- [Click here](#) to see the calendar of workshops and public hearings at which you can speak about the process or a specific map.
- [Click here](#) to view the draft maps or here to go directly to the Interactive Review Map.
- [Click here](#) for information on drawing and submitting maps.

At the hearings and workshops, we want you to:

- Define your neighborhood or community of interest
- Get the tools you need to draw a map of one district or of all districts
- Share your opinions of the draft maps



[DrawRanchoCordova.org](http://DrawRanchoCordova.org)

August 10, 2023

9

# Public Mapping and Map Review Tools

---

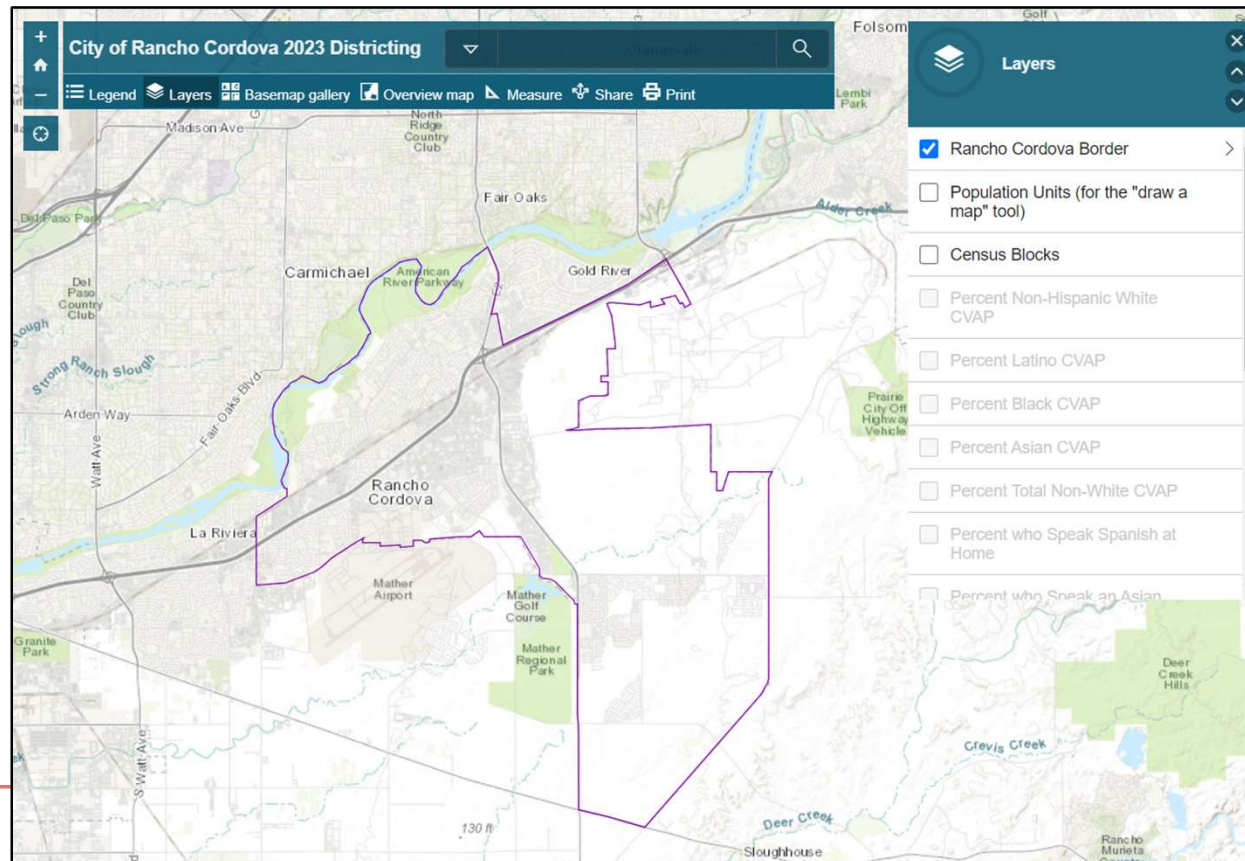
- **Different tools for different purposes**
- **Different tools for different levels of technical skill and interest**
  - Simple “review draft maps” tool
  - Easy-to-use one-page paper mapping tool
  - Powerful, data-rich “Draw a draft map” online tool

Whether you use the powerful online mapping tool, the paper tool, or just draw on a napkin, we welcome your maps!

# Simple Map Review Tool

## Online Interactive Review Map

- ESRI's "ArcGIS Online" – similar to Google Maps in ease of use
- Used to review, analyze and compare maps (not to create them)
- Includes overlays of "community of interest" and other data



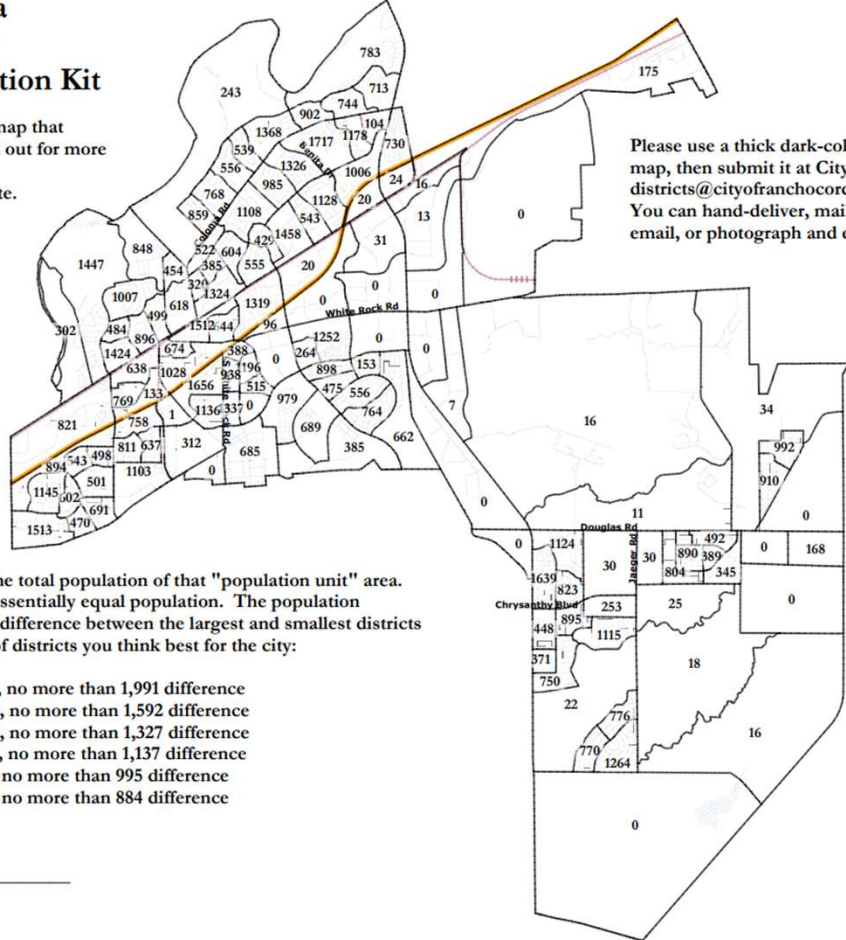
# Simple Map Drawing Tool

## Paper “Public Participation Kit”

- For those without internet access or who prefer paper
- Total Population Counts only – no demographic numbers

**Rancho Cordova  
2023 Districting  
Public Participation Kit**

An online version of this map that allows you to zoom in and out for more detail is available as a link from the City website.



Please use a thick dark-colored pen to draw your map, then submit it at City Hall or by email to [districts@cityofranchocordova.org](mailto:districts@cityofranchocordova.org). You can hand-deliver, mail, fax, scan and email, or photograph and email your map.

Each number indicates the total population of that "population unit" area. Each district must have essentially equal population. The population target and the maximum difference between the largest and smallest districts depends on the number of districts you think best for the city:

4 Districts: Target: 19,911, no more than 1,991 difference  
5 Districts: Target: 15,929, no more than 1,592 difference  
6 Districts: Target: 13,274, no more than 1,327 difference  
7 Districts: Target: 11,378, no more than 1,137 difference  
8 Districts: Target: 9,955, no more than 995 difference  
9 Districts: Target: 8,849, no more than 884 difference

Name: \_\_\_\_\_

Phone and/or email: \_\_\_\_\_

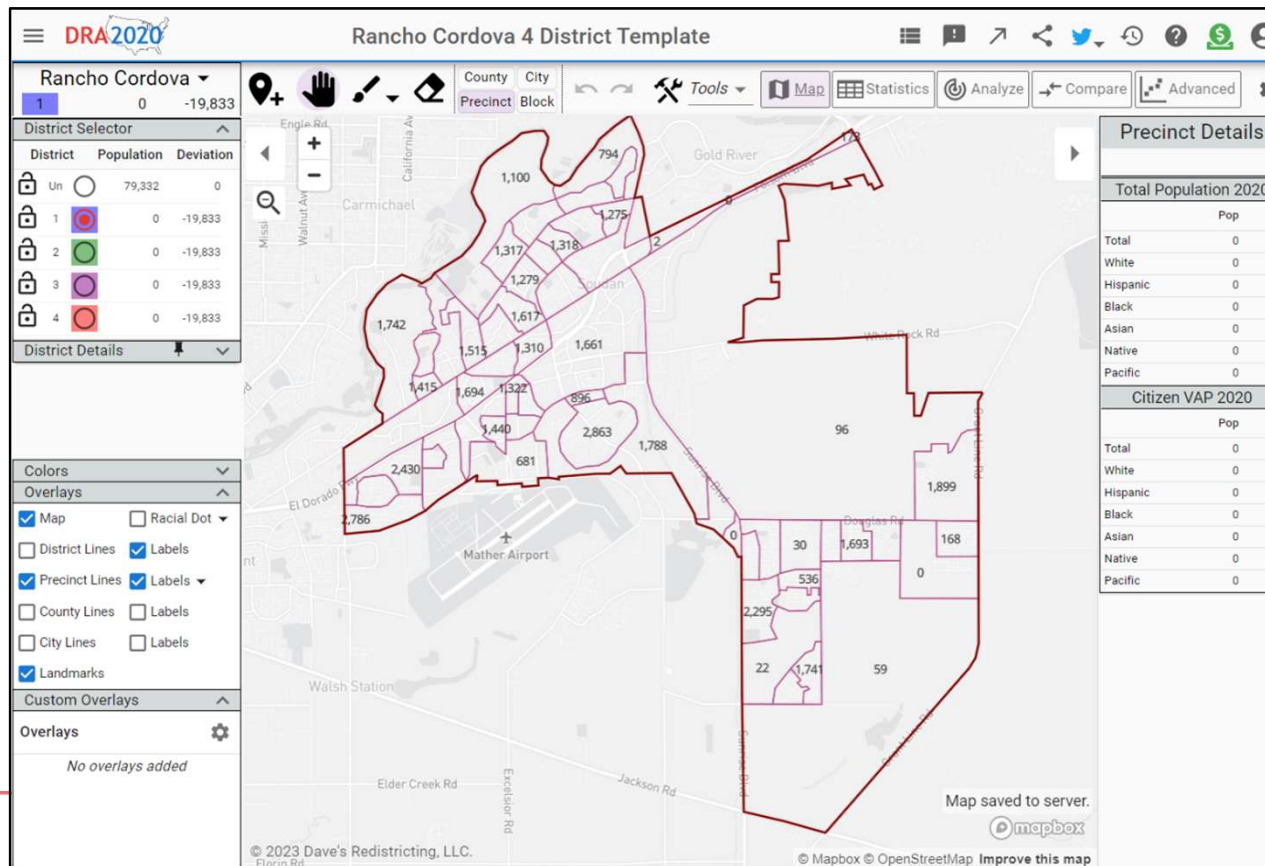
National Demographics Corporation, July 21, 2023  
©2021 CALIPER



# Online Map Drawing Tool

Simple “paintbrush & eraser” tool. A 4-minute “how-to” video is on the website.

- Full demographic data available
- Create, collaborate and share your map
- Remember: you must send in the link to your map when you finish or the City has no way to know you drew a map!





# Discussion

---

- What is your neighborhood and what are its boundaries?
- Any preferences on the number of districts and a rotating or citywide-elected Mayor?
- Any questions about the mapping tools?